

TENT INSTRUCTIONS
13' X 20'



PACKING LIST:

1. TENT
2. ROPES (TIED TO TENT)
3. TEN STAKES (IN TENT BAG)
4. 12 ANGLES (THERE ARE 2 EXTRA ANGLES FOR SPARE PARTS. They will not have cables connected to them)
5. 8 BLACK POLE PLUGS – if you did not order a frame from us, there will be black caps in the angle bag that go on the bottom of your wall poles.

SETUP DIRECTIONS:

1. CLEAR A FLAT AREA. MAKE SURE TENT IS NOT SET IN LOW SPOT THAT WILL COLLECT WATER.
2. LAY A GROUND TARP (OPTIONAL BUT HELPS KEEP THE TENT CLEAN)
3. ASSEMBLE RAFTER SYSTEM (SEE DIAGRAM BELOW)
4. INSTALL LEGS ON ONE SIDE (THIS KEEPS FRAME LOW ENOUGH TO INSTALL CANVAS)
5. PUT CANVAS ONTO FRAME (ZIPPER AND CORNERS SHOULD BE OPEN)
6. ADJUST CANVAS TO ALIGN WITH FRAME AND FASTEN STRAPS TO THE RIDGE POLES FROM INSIDE TENT.
7. INSTALL LEGS ON THE OTHER SIDE (LIFTING AND INSTALLING LEG POLES IS BEST DONE WITH TWO PEOPLE)
8. VELCRO AND TIE ALL CORNERS
9. ADJUST THE CANVAS ON FRAME AND FASTEN ALL THE STRAPS TO THE FRAME
10. TUCK GROUND CLOTH INSIDE UNDER SIDE POLES (MAKE SURE POLES HAVE PLUGS ON THE BOTTOM SO THEY DON'T PUNCTURE THE CANVAS).
11. STAKE AND TIGHTEN ROPES (MAKE SURE THERE IS NOT TOO MUCH TENSION ON ZIPPER AND ALWAYS STAKE YOUR TENT EVEN WHEN SETTING UP YOUR TENT AT HOME)

MATERIALS NEEDED IF MAKING YOUR OWN FRAME:

TO COMPLETE YOUR FRAME, YOU WILL NEED 1" EMT (ELECTRICAL CONDUIT) THAT CAN BE PURCHASED AT MOST HARDWARE STORES IN 10 FT SECTIONS. YOU WILL NEED TO PURCHASE TWENTY-ONE 10 FT SECTIONS.

NAME	QTY	LENGTH
RAFTER	8	7'-4"
COMMON POLE	9	6'-4 1/2"
LEG	8	4'-10"

ADDITIONAL FRAME INFORMATION:

IF MAKING YOUR OWN FRAME, YOU CAN INSTALL POLE CLIPS (SOLD SEPARATELY) ON THE COMMON POLES TO HELP WITH ASSEMBLY. DRILL A 1/4" HOLE 2 1/4" FROM THE END OF THE CONDUIT. MAKE SURE EACH END OF THE POLE ALIGNS WITH EACH OTHER. DRILL ONE SIDE, INSTALL POLE CLIP, AND THEN CLIP IT INTO AN ANGLE CONNECTOR. THIS WILL HELP ALIGN THE LOCATION FOR THE OTHER SIDE. A DRILL PRESS AND PIPE LEVEL ALSO WORKS. YOU CAN ALSO PUT THE FRAME TOGETHER THEN MARK HOLE LOCATIONS WITH A MARKER.

EXTRA METAL D-RINGS:

THERE ARE METAL D-RINGS THAT GO ALONG THE BOTTOM OF THE OUTSIDE OF YOUR TENT. THIS ALLOWS YOU TO STAKE DOWN THE WALLS. WE DO NOT SEND STAKES FOR THESE D-RINGS. WE RECOMMEND USING OUR 10" STAKES (SOLD SEPARATELY) FOR THESE LOCATIONS.

ATTENTION:

1. DO NOT DRAG THE TENT WHEN ASSEMBLING AND DISMANTLING. THIS MAY DAMAGE THE CANVAS.
2. WHEN WINTER CAMPING, CLEAN OFF SNOW BUILDUP. FRAMES ARE NOT DESIGNED TO HANDLE SNOW LOADS.
3. ONLY USE A WOOD STOVE PER THE MANUFACTURER'S RECOMMENDATION. ALWAYS HAVE A SPARK ARRESTOR. SPARKS WILL BURN A HOLE IN ANY TENT CANVAS. BURN HOLES CAN BE EASILY FIXED WITH A GLUE-ON PATCH.
4. CLEAN AND DRY TENT BEFORE STORING.
5. WE HIGHLY SUGGEST YOU SET UP THE TENT FOR THE FIRST TIME AT HOME BEFORE GOING INTO THE MOUNTAINS TO ASSURE YOU HAVE ALL THE PARTS NEEDED.

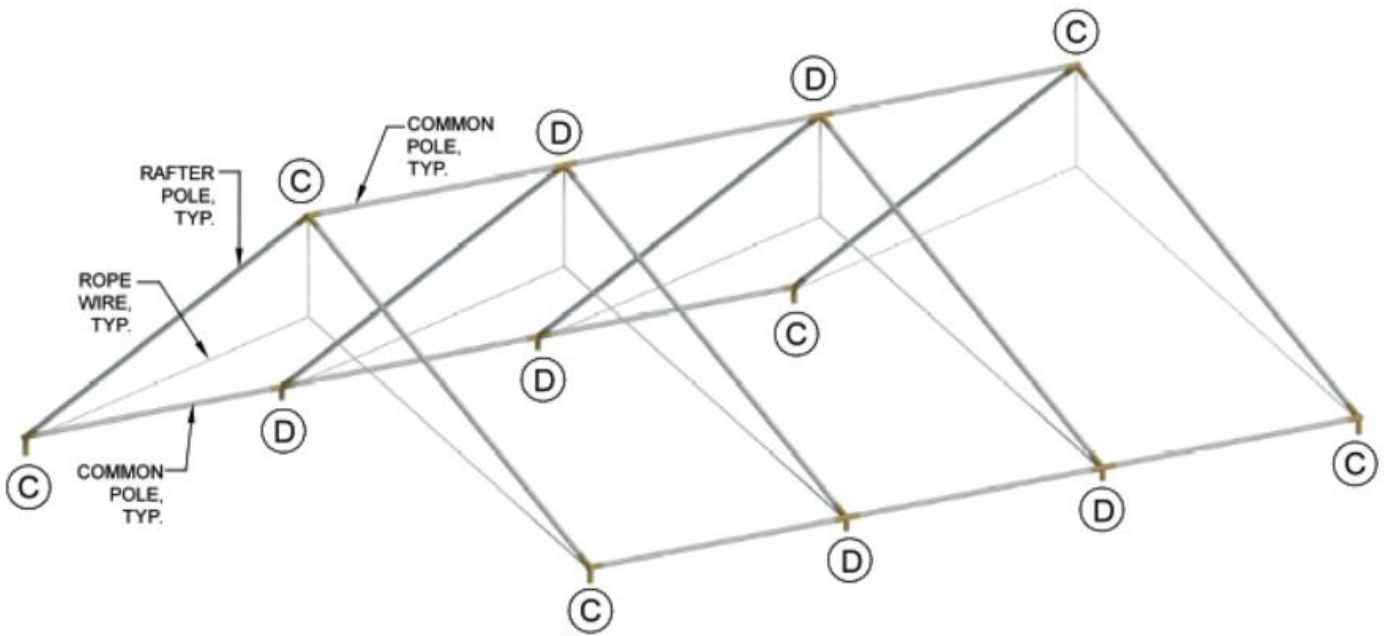
STOVE JACK:

A RUBBER GASKET IS NOT NEEDED; THE MATERIAL IS HEAT RESISTANT. IF YOUR STOVE JACK DID NOT COME PRE-CUT YOU WILL NEED TO CUT OUT AN OPENING BASED ON THE SIZE OF YOUR STOVE PIPE. HAVING THE HOLE ABOUT ¼" LARGER THAN THE PIPE, WILL ALLOW TENT TO MOVE AND NOT PULL ON THE STOVE PIPE.

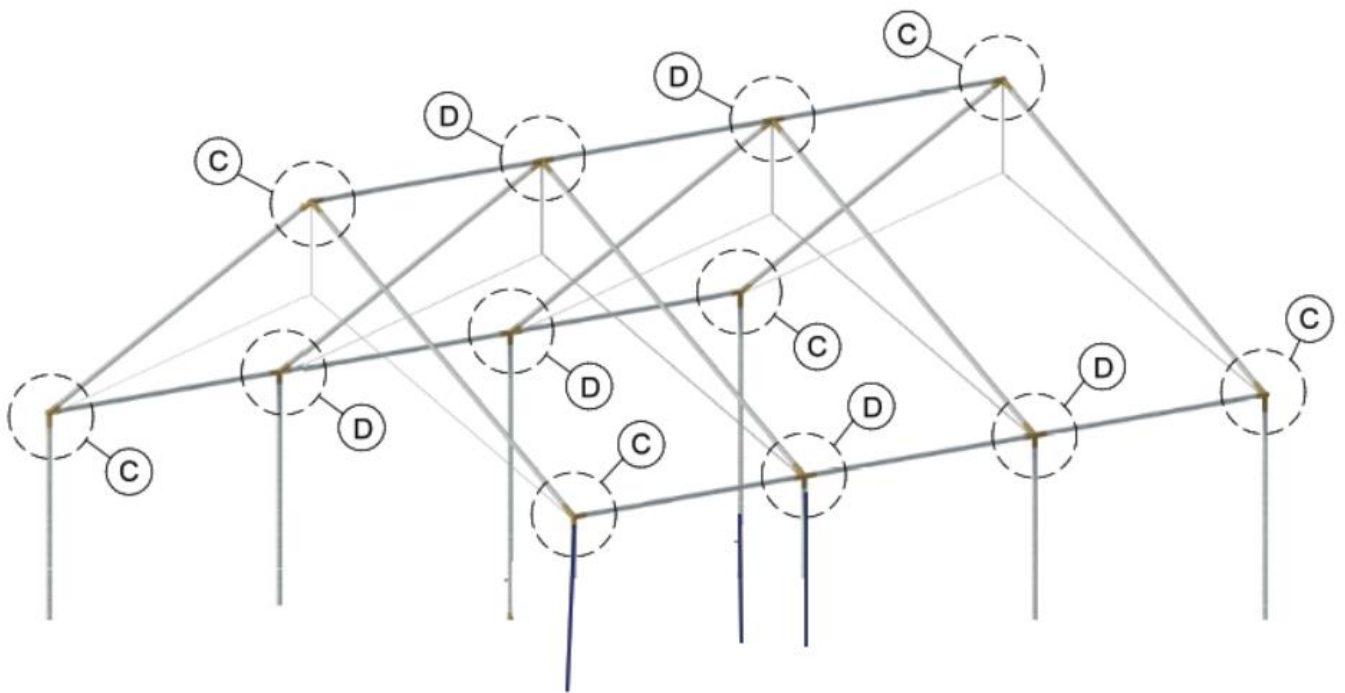
CUSTOMER SERVICE / WARRANTY:

PLEASE VISIT OUR WEB SITE FOR WARRANTY AND CUSTOMER SERVICE INFORMATION AT

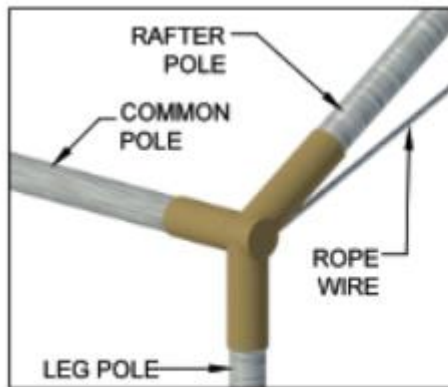
<https://elkmountaintents.com/customer-service/>



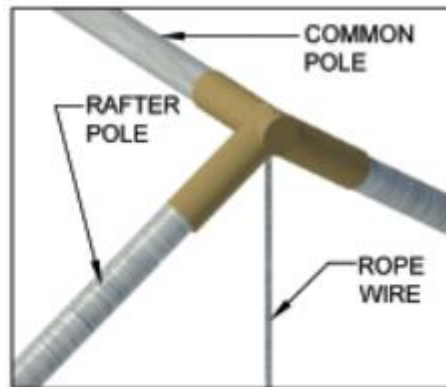
13' X 20' RAFTER SYSTEM



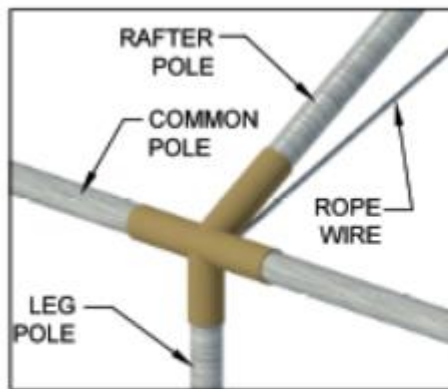
ANGLE TO POLE CONNECTION DETAILS



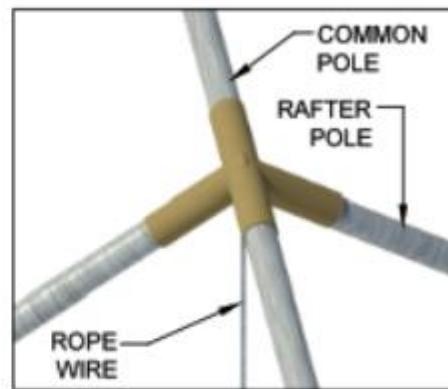
(C)



(C)



(D)



(D)

NOTE:
THIS ANGLE CONNECTOR IS
ALSO USED FOR AWNING
TO TENT ATTACHMENT